

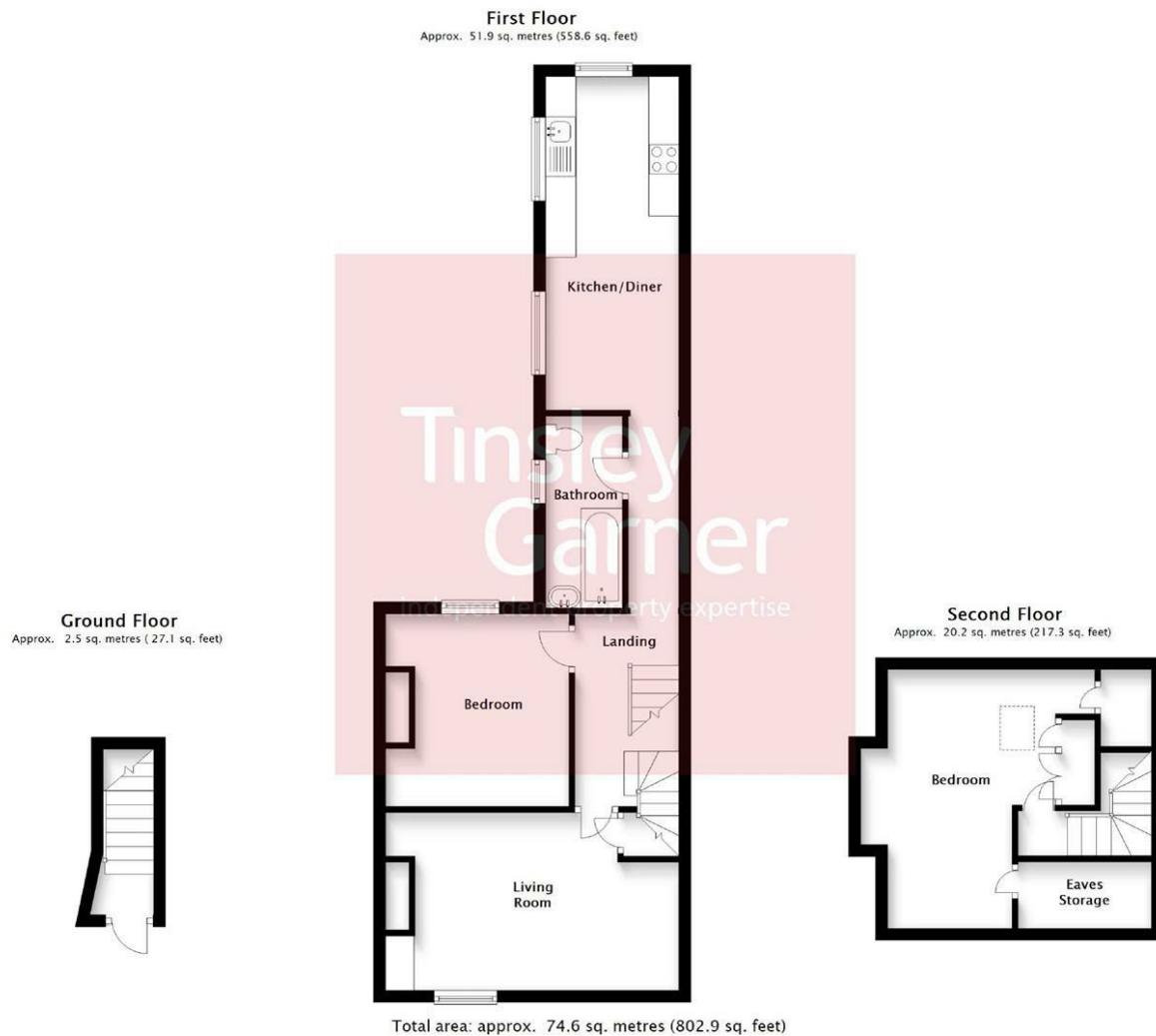


Top Flat, 5 Edward Street, Stone, Staffordshire, ST15 8HN

A very spacious two bedroom duplex apartment which has been newly refurbished and is situated to the first and second floor which is located in a superb position being within a very short stroll to Stone Railway Station, Stonefield Park and a few minutes' walk into Stone town centre - an absolute dream of a location. The accommodation comprises: Entrance hall with stairs leading to the first floor which opens out into a hallway leading through to the kitchen/diner (with washing machine), lounge, main bedroom and bathroom. To the second floor is a second double bedroom with wardrobes. Upvc double glazing. Gas fired central heating.

Unfurnished
Sorry no pets

£795 Per Month



Energy Efficiency Rating		Current	Potential
Very energy efficient - lower running costs			
(92 plus) A			
(81-91) B			
(69-80) C			
(55-68) D			
(39-54) E			
(21-38) F			
(1-20) G			
Not energy efficient - higher running costs			
		72	73
England & Wales	EU Directive 2002/91/EC		

Environmental Impact (CO ₂) Rating		Current	Potential
Very environmentally friendly - lower CO ₂ emissions			
(92 plus) A			
(81-91) B			
(69-80) C			
(55-68) D			
(39-54) E			
(21-38) F			
(1-20) G			
Not environmentally friendly - higher CO ₂ emissions			
		81	81
England & Wales	EU Directive 2002/91/EC		